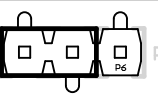
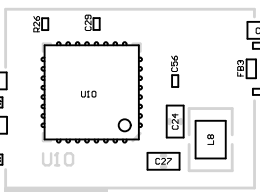
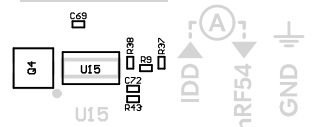


POWER

VDD CURRENT MEASURE



R29 R25
P26 P20
R30 R28

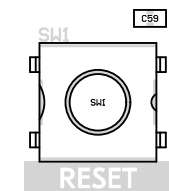
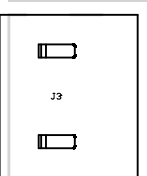


PMIC

400708
0048STL1

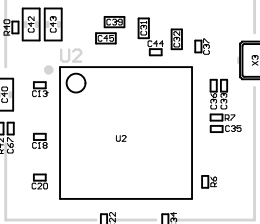
nRF54L15-DK

DEBUGGER



RESET

DEBUGGER



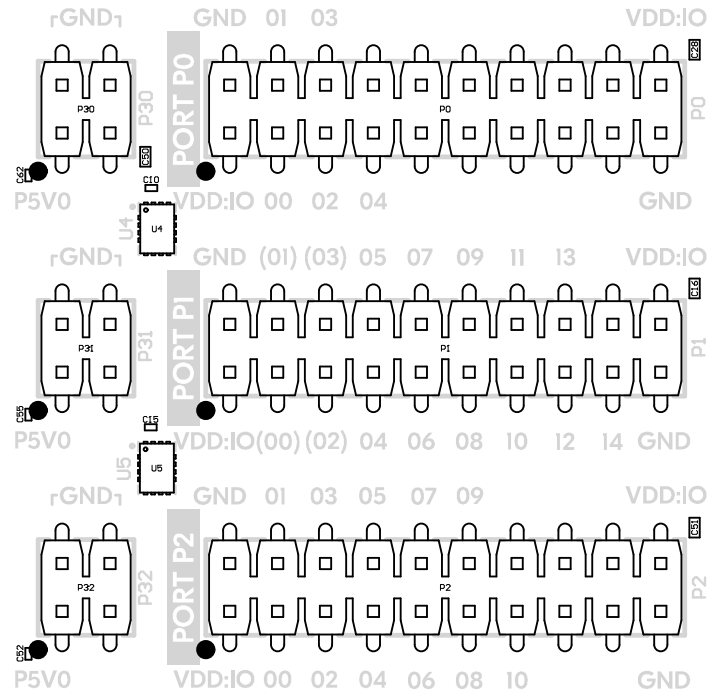
DEBUG OUT

3.6V Max

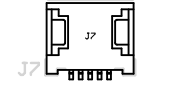
DEBUG OUT

3.6V Max

GPIO pins shown in parentheses are only available on headers with modification



NFC



R22 R21

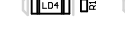
LED0



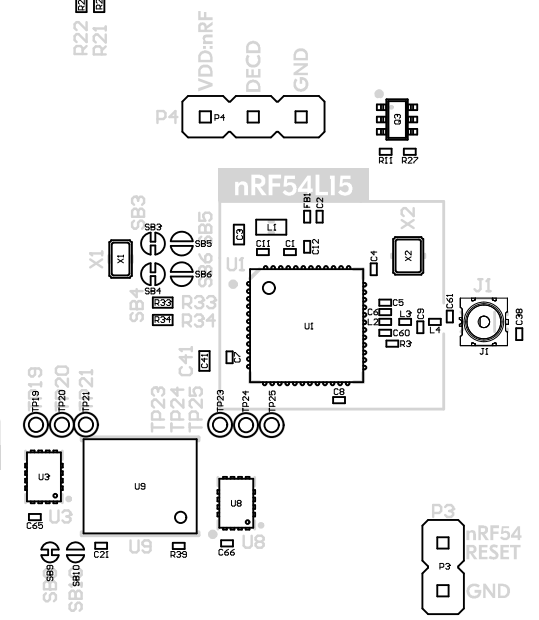
LED1



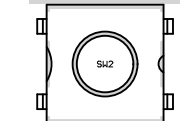
LED2



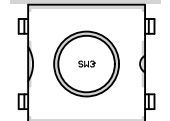
LED3



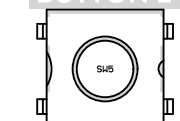
BUTTON 0



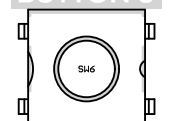
BUTTON 1



BUTTON 2

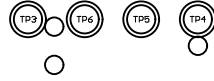


BUTTON 3





R 220-JP8930



J-Link™ Technology
www.segger.com



| GPIO | P2.07 | P1.07 | P1.06 | P1.04 | P1.05 | P0.03 | P0.02 | P0.00 | P0.01 | Function | Circuit |
|------|-------|-------|-------|-------|-------|-------|-------|-------|-------|----------|---------|
| | SWO | CTSI | RTS1 | TXD1 | RXD1 | CTS0 | RTS0 | TXD0 | RXD0 | | |

| GPIO | P2.05 | P2.01 | P2.02 | P2.04 | P2.03 | P2.00 |
|----------|-------|-------|-------|-------|-------|-------|
| Function | CS | CLK | DIO0 | DIO1 | DIO2 | DIO3 |
| Circuit | | | | | | |

| GPIO | P1.00 | P1.01 | P1.02 | P1.03 | P1.10 | P1.07 | P1.14 | P2.09 | P2.07 | P1.13 | P1.09 | P1.08 | P0.04 |
|----------|-------|-------|-------|-------|-------|-------|-------|-------|----------|----------|----------|----------|-------|
| Function | XL1 | XL2 | NFC1 | NFC2 | LED 0 | LED 1 | LED 2 | LED 3 | BUTTON 0 | BUTTON 1 | BUTTON 2 | BUTTON 3 | |
| HW | | | | | | | | | | | | | |

